

WORK ZONE

Traffic Control, LLC
A Helix Company
TRAFFIC SOLUTIONS

CATALOG



REQUEST A QUOTE

719-296-0222

aromero@workzonetrafficcontrol.com

WWW.WORKZONETRAFFICCONTROL.COM

SUMMER / WINTER PRODUCTS

SUMMER GEAR



SQUINCHER
Electrolyte
Powdered
Beverage Mix



ORIGINAL BUFF
Assorted Colors



OCCUNOMIX TD400
Tuff & Dry
Wicking &
Cooling Towel



**COOLING NECK
TOWELS AND
BANDANAS**



ML KISHIGO 1624
Cooling Neck Shade



HPSHADE30
Hardhat Shade
Fits on KASK Helmets



OCCUNOMIX 870
Snap-On Hard Hat
Sweatband



**OCCUNOMIX
LUX-RNG-ST**
Two-Toned
Solid Top
Ranger Hat



**ML KISHIGO
1622**
HI-VIZ Cooling
Neck Shade



OCCUNOMIX TD500
Wicking and Cooling
Ranger Hat with Neck
Shade

WINTER GEAR



**FLEECE-LINED
PARKA**



JS130 CLASS 3
Fleece-Lined
Bomber Jacket



CLASS 3
Pullover
Hoodie



CLASS 3
Full-Zip
Hoodie



**KISHIGO
JS119
Jacket**



ICE MELT



**8711 / 8713
CLASS 3**
Insulated Pants



JS121 CLASS 3
Insulated Bomber
Jacket



PORTWEST UB316PORTWEST
Two-Tone
Hoodie



**Ladies
Jacket**



**OCCUNOMIX
SS260-HVY
BALACLAVA**



**PORTWEST
LED
Beanie**



**PORTWEST
LED
Twin Beanie**



BEANIES
Assorted
Colors



**HARD HAT
LINERS**

PERSONAL PROTECTIVE EQUIPMENT HI-VIZ APPAREL



SV272-3ZGM
Two Tone Surveyor
Solid Front Pockets
4 Pockets



1565 / 1566
Two Tone Economy
1 Pocket



1191
Economy
6 Pocket



1576 / 1577
Two Tone Contrast
X-Back 4 Pockets



1505B
Breakaway
3 Pockets



US386
Mesh ANSI Class E
2 Pockets



US388
Mesh ANSI Class E



E046
Class E Cargo
Pants

PERSONAL PROTECTIVE EQUIPMENT HI-VIZ APPAREL CONT.



1242 / 1243
Two Tone
Surveyor
6 Pockets



SV63
Two Tone Surveyor
Solid Front,
Mesh Back,
8 Pockets



1567 / 1568
Economy
1 Pocket



KISHIGO 1552B
Class 3 Vest



KISHIGO 1750
Class 3 Vest



S5014
High Performance
Surveyor:
Padded Neck,
Hidden Back Pouch,
7 Pockets



ECONOMY WICKING BIRDSEYE T-SHIRT
(Lime/Orange Short & Long Sleeve Black Bottom Available)
&
HIGH PERFORMANCE STRETCH WICKING W/ SEGMENTED TAPE
(Short Sleeve & Long Sleeve Available)



GLO-G1
High Visibility Mesh
Polyester Gaiters
ANSI Class E



3930
Mesh
Gaiters



RWJ102
Storm Cover
Rain Pant
ANSI Class E



RWJ102
Storm Cover
Rain Jacket
ANSI Class 3
3 Pockets



3PC RAIN SUIT
ANSI Class 3
(Jacket) 4 Pockets

PERSONALIZED COMPANY LOGO AVAILABLE ON ALL APPAREL

PERSONAL PROTECTIVE EQUIPMENT ACCESSORIES / HEARING PROTECTION



ILLUMAGEAR HALOTM SL HARD HALO LIGHT

The ILLUMAGEAR Halo SL is much more than a headlamp; it's a revolutionary lighting system that provides visibility in all directions up to a quarter-mile away. The new spotlight and task light features provide the ideal lighting conditions for any job. So you get it done right.

- Lightweight and cord free, 50ft spotlight, powerful flood task lighting, compatible with any standard hard hat, battery life indicator, charger included, water resistant.
- Includes 1x 18650 Rechargeable Lithium Ion Battery



- LED technology
- 3 brightness levels plus strobe
- Aircraft-grade 6061-T6 aluminum housing with Type III hard anodized finish
- Single switch located on side of the light
- Adjustable ratchet tilt head
- IP-X7 Waterproof
- Chemical, heat, and impact resistant
- 2' Male USB (Type A) to Male Micro-USB (Type B) Cable (Included)
- Powered by a rechargeable Li-ion battery (Included)
- Limited Lifetime Warranty



Corded 100/BOX
Uncorded 200/BOX
Available Individually



WINGED



NRR 26dB / SNR 30dB
ANSI S3.19

PERSONAL PROTECTIVE EQUIPMENT GLASSES / GOGGLES



INTRUDER ECO
Individual or 12/case



CARHART



ORANGE CRUSH



GREEN GRASSHOPPER AF



PYRAMEX ZTEK



POLARIZED



REDLINE CLEAR



**SS100
SIDESHIELDS**



OVER GLASSES EYEWEAR



PYRAMEX



**VADER
GOGGLES AF**

PERSONAL PROTECTIVE EQUIPMENT GLOVES



GLOBAL GLOVE
PORTWEST A220
PUG-11



RWG18



RWG557



RWG10



GLOBAL GLOVE
378GKGE



GRIPSTER



RWG22



RWG603



RWG566
TOUCHSCREEN



FIRE RESISTANT



HARD HATS AND ATTACHMENTS



STANDARD
BRIM



FULL BRIM



VENTED



COLORS
AVAILABLE

SKULLGARD
TYPE 1
ANSI/ISEA
Z89.1-2009
(Class G)



REFLECTIVE
4"x1" HARD HAT STRIPS
16 Stickers/Sheet



HHAB HARDHAT
VISOR ATTACHMENT

CLAR
FACESHIELD



MESH
FACESHIELD

PERSONAL PROTECTIVE EQUIPMENT

HARD HATS AND ATTACHMENTS



ZENITH X
ANSI Z89.1-2014 EN 12492



SUPERPLASMA HD
ANSI Z89.1 + CSA294.1 EN 12492



ZENITH X HI-VIZ
ANSI Z89.1-2014 EN12492



SUPERPLASMA HD HI-VIZ
ANSI Z89.1 + CSA294.1 EN 12492



ZENITH X AIR
ANSI Z89.1, EN12492



ZENITH X AIR HI-VIZ
ANSI Z89.1, EN12492



ZEN VISOR
Clear/Smoke/Mirror



V2 VISOR
Clear/Smoke/Mirror



VISOR FULL FACE
Smoke/Clear



HEARING PROTECTION
CE EN 352 / ANSI S3.19



MESH VISOR
ANSI Z87.1, EN 1731/F

PERSONALIZED COMPANY LOGO AVAILABLE ON ALL HARD HATS

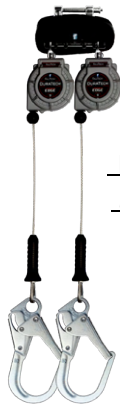
PERSONAL PROTECTIVE EQUIPMENT HARNESSES / LANYARDS / RETRACTABLES



**FALLTECH 737210
CROSS STRAP**



**FALLTECH CABLE
PASS THRU SLING**



**FALLTECH
89909TP3**



**FALLTECH 727630
LEADING EDGE**



**FALLTECH 6'
DURATECH**



**FALLTECH
CONTRACTOR
WEB**



**TIE DOWN RZ
ROOF GUARDRAIL**

Meets OSHA requirements.
Made in USA

FALLTECH HORIZONTAL LIFELINE KIT
OSHA CRF1962.502 AND CRF1910.66
ANSI A10.32-2004



FALLTECH 7440
Expansion
wedge anchor
for concrete,
5,000lb



**FALLTECH
FLOTECH
3-D HARNES**



**FALLTECH
7073LX
CONTRACTOR
3D construction
belted full body
harness**



**FALLTECH 7021
JOURNEYMAN
FLEX STEEL
1D standard
non-belted
full body harness,
tongue buckle
leg adjustment**



**FALLTECH
7015
CONTRACTOR
1D Standard
Non-belted full
body harness**

WORK ZONE SAFETY

LIGHTING / BATONS / TRAFFIC FLARES



**MULTIQUIP GLOBUG
LIGHTING SYSTEMS**



PAVER ATTACHMENT

**LIGHT OPTIONS:
400W-4000W Cart, Stand, &
Trailer Mount**



BATONS



SEQUENTIAL GUIDANCE FLARES

Sold individually or in packs



10 Pack



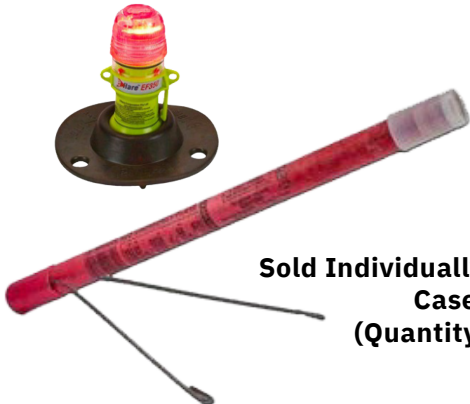
6 Pack



4 Pack



**LED & TRADITIONAL
ROAD FLARES**



Sold Individually or by the
Case
(Quantity 36)

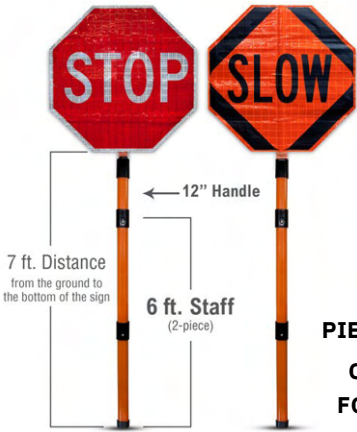
**CONE
ADAPTORS**



TRIANGLE KITS

WORK ZONE SAFETY

WORK ZONE PRODUCTS



VDOT STOP SLOW PADDLES



COVERS

ROLL-UP WITH 2
PIECE STAFF /HANDLE
COMES WITH BAG
FOR EASY STORAGE



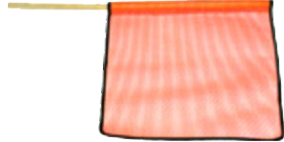
LED



PVC
HANDHELD



18" AND 24" FLAGS KNIT OR VINYL



TYPE A/C D
BATTERY



TYPE A/C
PI-LIT
SEQUENTIAL



TYPE A/C BATTERY



TYPE B
SOLAR

BARRICADE LIGHTS

AIRPORT SAFETY 360 DEGREE SOLAR LIGHTS



BOX
BASE



SCREW/
THREADED UNIVERSAL
BASE



BASE

ON TOP MATERIAL LIFT



FALLTECH 7509

- Tripod Kit With 7276 Tripod
- 7297 Winch, 7281 3-WAY Retrieval SRL
- 2x7291 B Leg Brackets



MANHOLE
COVER LIFT



ALLEGRO 9401
Manhole Guard



GENERAL EQUIPMENT COMPANY

Non-Hazardous Air
Ventilation Blower

WORK ZONE SAFETY

FLAGGER AND VEHICLE LIGHTING

FLAGGERS STATION & WORK AREA LIGHTING



- 8 foot light elevation
- Collapsible aluminum extension mast
 - cam lock adjustments with retractable cable
- Stainless Steel legs
 - easy to retract and deploy creating tripod base
 - stable on uneven ground
- Lamp heads independently, directionally adjustable
- Battery rated for 500+ charge cycles
 - push to test voltage meter
- Charge with clamp style jumper cables
 - can jump start vehicle
- DC Power Port
 - Operate unit with external 12 VDC power
 - run other DC powered electrical devices
- Yellow LED flasher on unit for added safety
- Weatherproof case
- Lifetime warranty on light heads
- One year replacement warranty on battery and charger



FENIEX FUSION ARROW BOARD

40" ARROW BOARD IS IDEAL FOR D.O.T., TRAFFIC, CONSTRUCTION OR TOW VEHICLE. THE FUSION ARROW BOARD FEATURES LEFT, RIGHT, AND CENTER-OUT ARROW PATTERNS AS WELL AS STANDARD WARNING PATTERNS FOR MAXIMUM VISIBILITY, SAFETY, AND TRAFFIC FLOW



SOUNDOFF SIGNAL PINNACLE EPL9000

Available in 17", 24", 36", 42", 48", 54", or 60



SOUNDOFF SIGNAL NROADS LED LIGHTBAR

Available in 17", 24", 36", 42", 48", 54", or 60



MINI LIGHTBAR

Available in Permanent & Magnetic Mount



MINI SURFACE MOUNT

Dual Available Black or White Housing

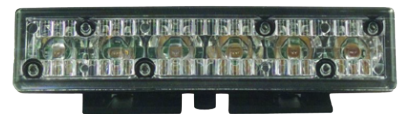


LED BEACONS

Available in Permanent & Magnetic Mount



BACKUP WARNING



DECK/GRILLE MOUNT

TOOLS & ACCESSORIES

MEASURING TOOLS



TOOLS & ACCESSORIES

FENCE / LOAD SECURING / FUEL / HANDTOOLS



ASSEMBLED SILT FENCE

Economical 36" or 24" Width Silt Fabrics

1- 1/2" X 1- 1/2" Hardwood Stakes

11 Stakes per 100'



SAFETY FENCE
4' X 100' Roll Oak Stakes Available



TARP STRAPS



RATCHET STRAPS



BINDERS



CHAINS



18" & 26" CONVEX MIRRORS



3 MIL & REINFORCED

RED

Most widely used for flammable liquids such as gasoline.



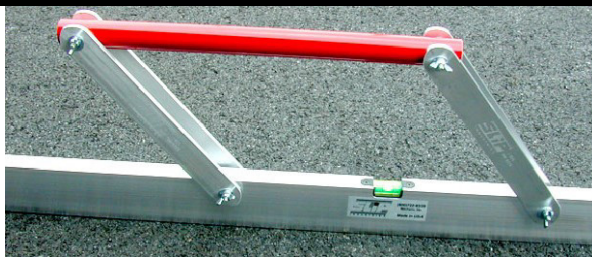
BLUE

Frequently used for storage of the kerosene.



YELLOW

Can be used to designate the storage of diesel fuel.



12' HIGHWAY STRAIGHTEDGE



LUTES



BARS & TAMPERS



SCRAPERS



SHOVELS & SCOOPS



POST HOLE DIGGERS



RAKES

CUSTOM & MUTCD SIGNS

CUSTOM SIGNS



MUTCD



R1-1



W20-7



W1-1R



R1-2



M4-10R



W1-8



R2-1



M1-1



R7-1



M3-4



W20-1



W16-7P



W11-2

WE OFFER PERMANENT SIGN BRACING OR Z-BAR INSTALLATION



CUSTOM A-FRAME SIGN BOARDS.

MORE OPTIONS AVAILABLE!

TRUCK MOUNTED MUTCD



G20-4



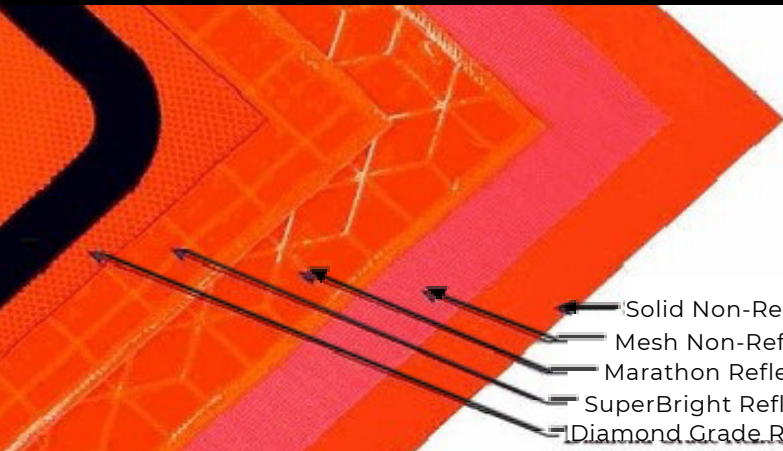
W20-V10



G20-V1

WE MAKE TMA SIGNS!

ROLL UP SIGNS & STANDS



- Solid Non-Reflective Vinyl
- Mesh Non-Reflective
- Marathon Reflective
- SuperBright Reflective
- Diamond Grade Reflective



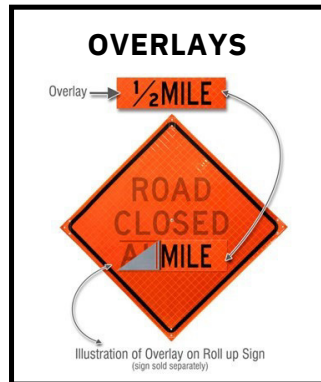
ALL STANDS ARE NCHRP-350 APPROVED & DOT APPROVED



**SS548UCR
SPRINGLESS
STAND**



DUAL SPRING



**SINGLE
SPRING**



**MEDIAN ADAPTOR DUAL
SPRING SIGN STAND**

FLAGS & ATTACHMENTS



FULL SIZE STAND

CUSTOM ROLL-UPS AVAILABLE

SIGN POSTS / BRACING / STREET SIGNS



U-CHANNEL

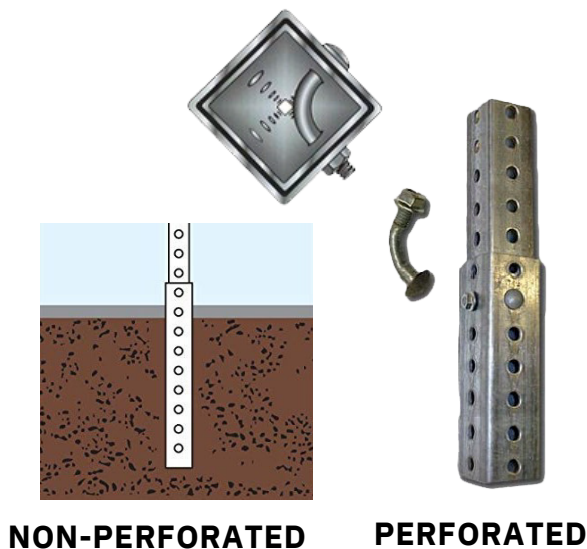
- Punched full length of post
- Powder coated green or hot dipped galvanized finish
- Posts available in lengths of 6', 7', 8', 9', 10', 11', 12'
- Posts 2# and 3# per foot
- 7' Galvanized 1.33# per foot (per VDOT spec)



POST DRIVING / EXTRACTING



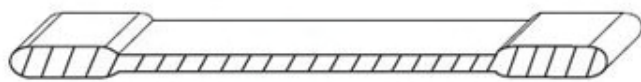
SQUARE POST ANCHORS



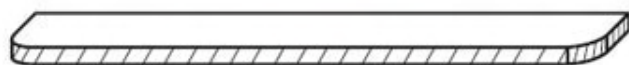
NON-PERFORATED

PERFORATED

STREET SIGNS



Extruded

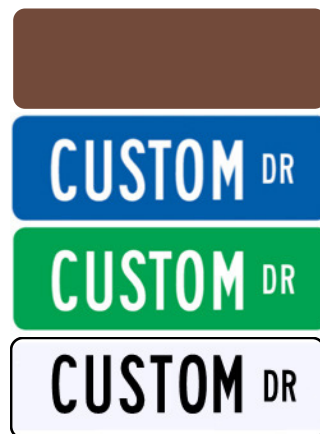


Flat

6" TALL FLAT OR EXTRUDED BLADE SIGNS ARE AVAILABLE IN:
24", 30", 42", 48" Lengths

9" TALL FLAT OR EXTRUDED BLADES ARE AVAILABLE IN:

24", 30", 36", 42", 48" Lengths



WE OFFER RIVET / SPACER INSTALLATION

CUSTOM STREET SIGNS AVAILABLE

SIGN POSTS / BRACING / STREET SIGNS CONT.

QUICKPUNCH



**SQUARE
PREPUNCH**



Part Number	Length x Size	Wall Thickness
PSTS10X2GA12	10' x 2" x 2"	12 GA
PSTS10X2.5GA12	10' x 2.5" x 2.5"	12 GA
PSTS12X2GA12	12' x 2" x 2"	12 GA
PSTS12X2.5GA12	12' x 2.5" x 2.5"	12 GA
PSTS14X2.5GA12	14' x 2.5" x 2.5"	12 GA

Part Number	Length x Size	Wall Thickness
PSTS8X2GA14	8' x 2" x 2"	14 GA
PSTS10X2GA14	10' x 2" x 2"	14 GA
PSTS12X2GA14	12' x 2" x 2"	14 GA
PSTS14X2GA14	14' x 2" x 2"	14 GA

Part Number	Length x Size	Wall Thickness
PSTS6X2.188GA10	10' x 2 3/16" x 2 2/16"	10 GA (Heavy-Duty)
PSTS10X2.5GA10	10' x 2.5" x 2.5"	10 GA (Heavy-Duty)
PSTS12X2.188GA10	12' x 2 3/16" x 2 3/16"	10 GA (Heavy-Duty)
PSTS12X2.5GA10	10' x 2.5" x 2.5"	10 GA (Heavy-Duty)
PSTS14X2.5GA10	14' x 2.5" x 2.5"	10 GA (Heavy-Duty)
PSTS16X2.5GA10	16' x 2.5" x 2.5"	10 GA (Heavy-Duty)

ROUND



**Available Lengths:
10', 12', 13'
Diameter:
2 3/8"**

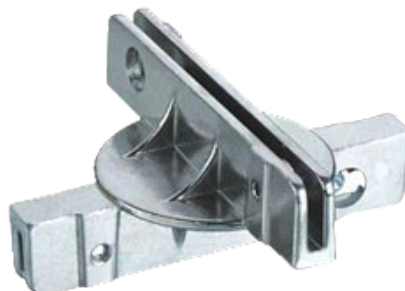
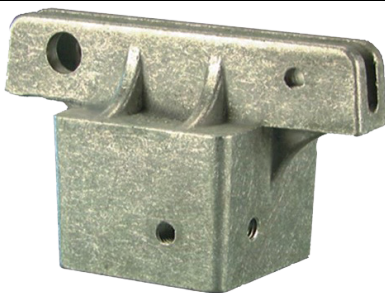
**ROUND POST
SIGN CLAMP**



SLIP BASES



MOUNTING BRACKETS



PAVEMENT SUPPLIES

PAVEMENT MARKING & PAINT



TITAN 850



275 GAL TOTE

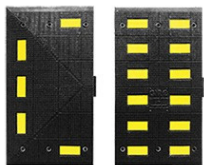


TITAN 3500

SETFAST
ACRYLIC
WATERBASED
& FAST DRY
ALKYD OILBASED
TRAFFIC
MARKING PAINT



SPEED BUMPS / SPEED HUMPS / WHEEL STOPS



PRECAST CONCRETE
WHEEL STOPS

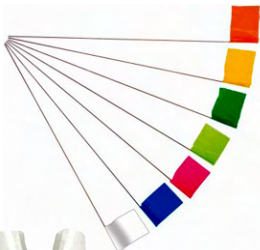
- 6' STANDARD
- 6' SLOTTED
- TRUCK DOT-APPROVED
- 6' RUBBER



MARKING / FLAGGING



CHALK & CHALK REELS



PERMANENT
TRAFFIC & ALL
PURPOSE SPRAY
PAINT



PAVEMENT SUPPLIES

THERMOPLASTICS



GLASS BEADS

Potters' Standard Highway Safety Marking Spheres meet or exceed every adopted highway safety marking sphere standard in effect today (AASHTO M247)



HOT APPLIED THERMOPLASTICS



**TITAN
THERMOMARK
250**



**GRACO
LINELAZER V 130HS**



**3600MIL
THERMOPLASTIC
APPLICATOR**



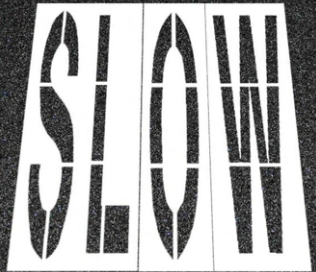
**GRACO
LINEDRIVER HD**

**TRAILER MOUNT
THERMOPLASTIC
PREMELTER
TP1500**



**BAGGED
THERMOPLASTIC**

STENCILS



**CONTRAST
TAPE**

PERMANENT / TEMPORARY TAPE



PRE-FORMED THERMOPLASTICS



EASYPOUR CONCRETE FORMING TUBES



PAVEMENT & CRACK SEALANTS



HORSEHAIR BRUSH

**U-SHAPE, V-SHAPE,
STRAIGHT SQUEEGEE**



NEYRA FORCE SEALER

Neyra Force is a water-based, petroleum resin sealer that outperforms traditional pavement sealers. While providing the benefits of a coal tar sealer, Neyra Force is environmentally friendly and safe for your employees to apply.



THERMOFLEX

Hot Applied
Crack/Joint
Thermosealant



GATORFILL

Trowelable
Surface
Mastic



PLYOLASTIC

Pourable
Crack
Filler



RY10MA



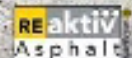
RY10MA-PRO

AQUAPHALT™

Finally! A Permanent, Environmentally Friendly Asphalt Patch

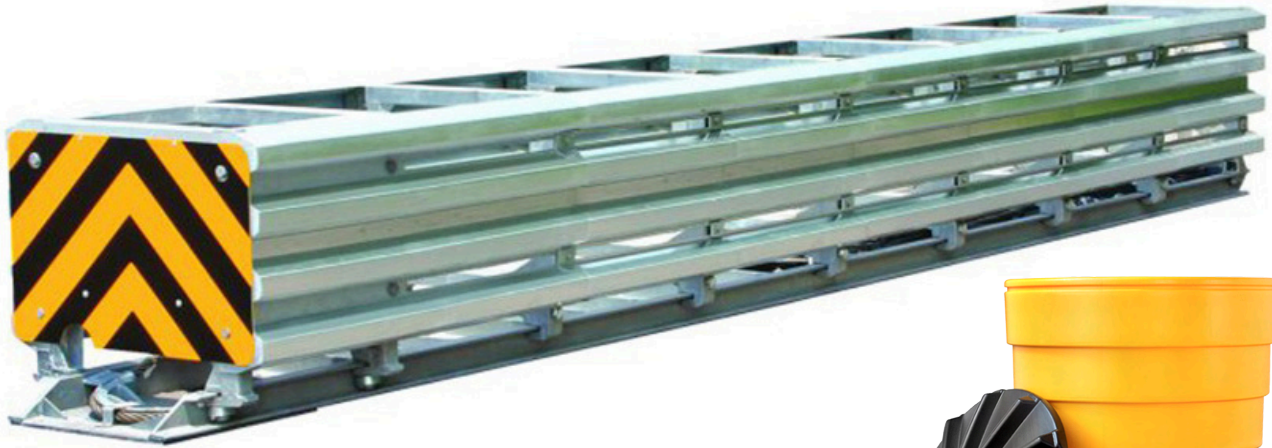
Revolutionary permanent asphalt and concrete repair material for pothole repair, pavement repair, utility cuts, walkways, tennis courts and driveway repair – it works even in wet and cold conditions

- ▶ Eco-friendly binder reacts and hardens with only water—no toxic solvents
- ▶ Aquaphalt is laid directly from its container—no need to mobilize large crews and equipment
- ▶ Minimizes roadway disruption with no need for special preparations
- ▶ Pre-mixed and permanent Aquaphalt is a one-time fix



HIGHWAY SAFETY DEVICES

ATTENUATORS & SAND BARRELS



**SCI SMART
CUSHION**



**CRASH GUARD
SAND BARRELS**

PORTABLE RUMBLE STRIPS

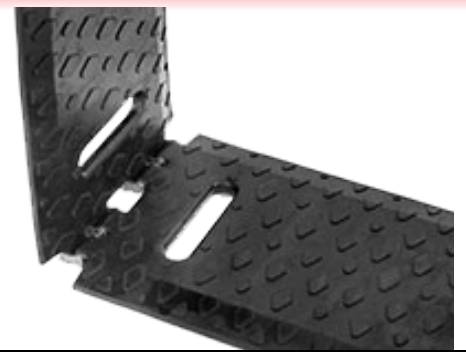
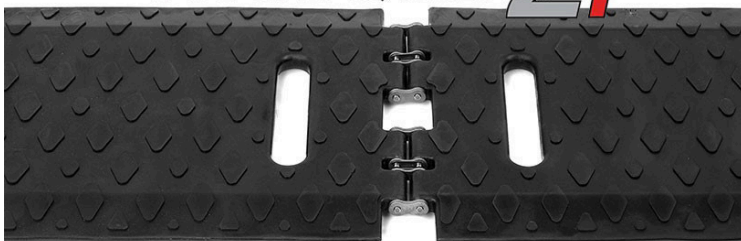


**T HANDLE FOR EASY
LOADING AND UNLOADING**



DEMO OF USE AVAILABLE

RoadQuake²F

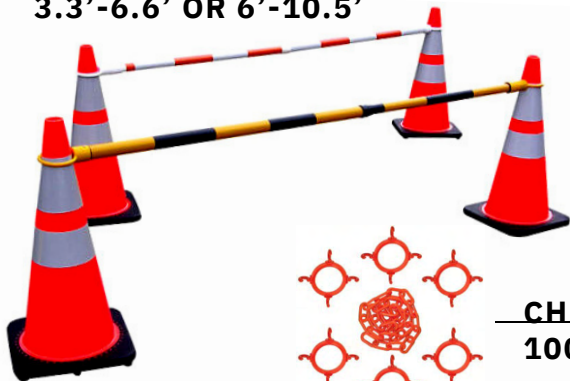


HIGHWAY SAFETY DEVICES

CONES & CONE ATTACHMENTS

TELESCOPING CONE BAR

3.3'-6.6' OR 6'-10.5'

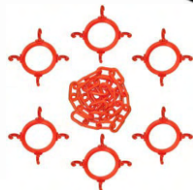


CONE WEIGHTS

4.5LB OR 7LB



PI-LIT SUNFLOWER BEACON



CHAIN CONNECTOR

100' OR 500' Chain

CUSTOM CONE SIGNS



Double
Side
Plug



One
Side
Plug



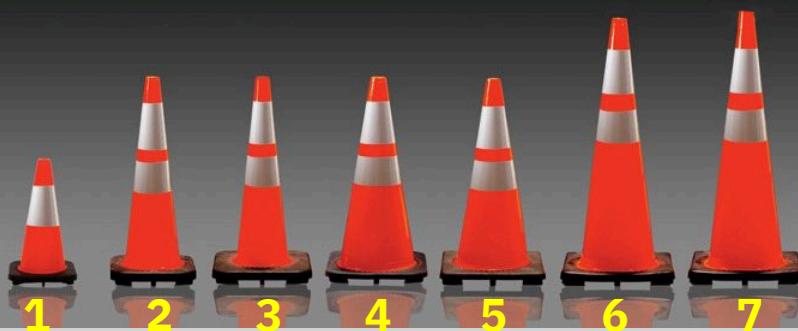
COBRA TAPE



CONE VARIATIONS

12" NOT SHOWN

- 1. 18" 3LBS
- 2. 28" 7LBS SLIM
- 3. 28" 10LBS SLIM
- 4. 28" 7LBS WIDE
- 5. 28" 10LBS WIDE
- 6. 36" 10LBS
- 7. 36" 12LBS



CONE BAR SIGNS

Customizable Option
Available



Available
Colors

**Non-Reflective
Available



CONES & BARRELS AVAILABLE FOR RENT & PERSONALIZATION

HIGHWAY SAFETY DEVICES

CHANNELIZERS & BARRICADES



CHANNELIZERS

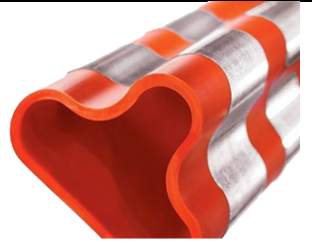


FLEXI-GUIDE
FG300



SURFACE
MOUNT

GROUND
MOUNT



BUTYL PADS

BARRICADES



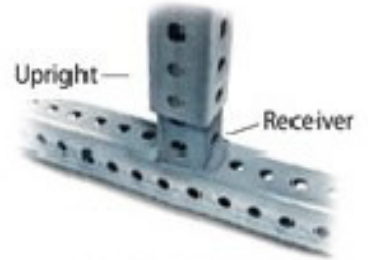
TYPE II



TYPE III



Available in:
4', 6', 8'
10', 12'



Stub Weld Base

DIAMOND GRADE PATTERN

Available
Widths
2", 4", 6"



Tape Available by
the Foot



1" X 150', 2" X 150', 4" X 150',
6" X 150', AND 8" X 150'
GREAT FOR HARD HAT STRIPS!

WATER-FILLED BARRIER

Fencing Attachment Optional



Available
For
Purchase
Or Rent

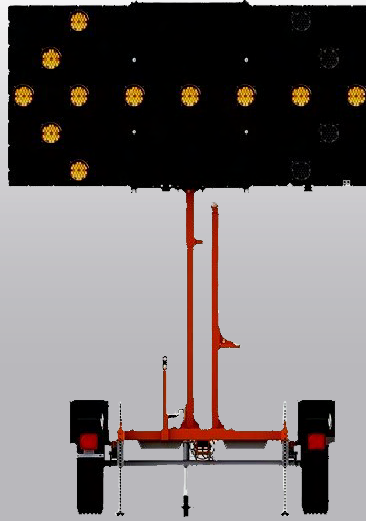


MOT EQUIPMENT SALES & RENTALS

ARROW BOARDS / SPEED CAM / LIGHTS / FLAGGER



**VER-MAC PCMS 1210 PRO
SERIES 3 LINE OR FULL MATRIX**



**VER-MAC ST-4815
PRO SERIES**



SP-3248V SPEED CAM

WANCO TRUCK MOUNTED ARROW BOARDS



- 24 x 48 (61 x 122)
- 30 x 60 (76 x 152)
- 36 x 72 (92 x 183)
- 48 x 96 (122 x 244)

VER-MAC PTL1000



Ver-Mac's PTL1000 is a compact, battery powered portable target light. The PTL-1000 features Ver-Mac's exclusive Nightbrite Technology

WANCO COMPACT



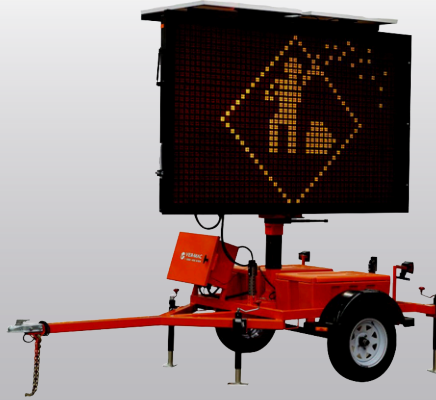
Up to 18 units on a single truck, aim lights from the ground, heavy gauge all steel body, tallest mast in class at 24 1/2 FT; largest fuel tank in class at 60 GAL

MOT EQUIPMENT SALES & RENTALS

VARIABLE MESSAGE BOARDS / TRAFFIC SIGNAL



VER-MAC PCMS 548LE



VER-MAC PCMS 320

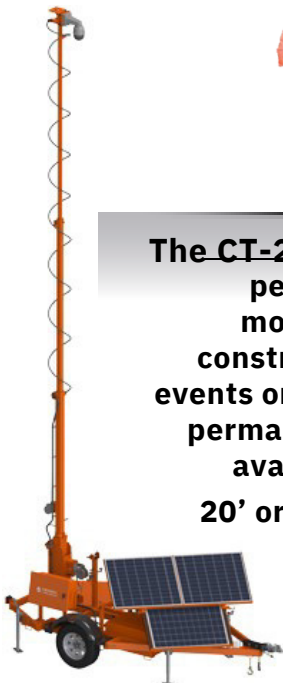


VER-MAC PCMS 4880

NORTH AMERICA TRAFFIC RCF 2.4 AFAD

The automated flagger assistance device can be used on many DOT jobsites and is MUTCD compliant.

Still recognized today as the **SAFEST ALTERNATIVE** to human flaggers for temporary work-zone traffic control.



The **CT-2430 camera trailer** is perfect to remotely monitor work zones, construction sites, special events or any application where permanent cameras are not available or feasible.
20' or 30' mast available.



VER-MAC'S TLD 3612G3

A battery/solar-powered Nema TS5 compliant portable traffic signal trailer set. This tandem tow trailer set comes with two traffic signal heads on each trailer.

The **TLD-3612G3** features include the innovative V-Touch TLD controller, tilt-and-rotate solar panels, hydraulic lift mechanism, advance radio communication and our JamLogic software (optional)

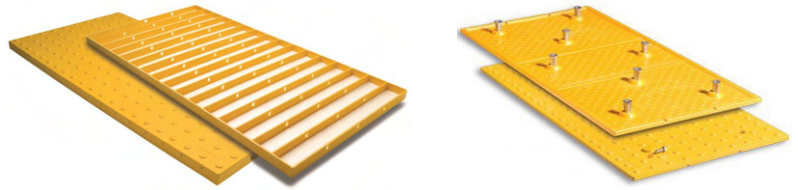


TLD-2312

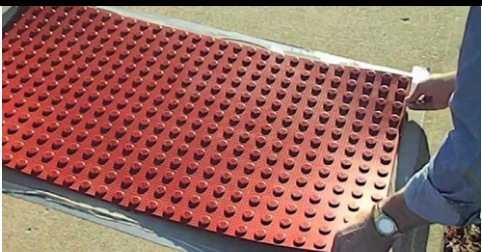


CAST TILES / FLEXIBLE TILES

CAST TILES / FLEXIBLE TILES



The **Cast-in-Place** panel is a great long term solution for any project or climate. Made with a durable exterior homogenous glass, carbon, and fiberglass reinforced composite material; the thick, heavy panel and sturdy embedment ribs ensure a strong bond and superior structural support.



The **Surface Applied** panel is the perfect solution for retrofitting existing concrete surface or new construction, our surface applied detectable warning panels are constructed of an exterior grade, fiberglass polymer composite material.

FLEXIBLE SIGNS | BOLLARDS | COVERS



Fixed Base
Permanent Surface Mount Base



One Base®
Universal Portable Base



Drivable Base
Off-Road Soil Installation Base



Recessed Base
In-ground Snow-Plowable Base



Magnetic Base
Non-Vehicular Multi-Use Base



Quick Release Base
Permanent Base for Interchanging Uprights

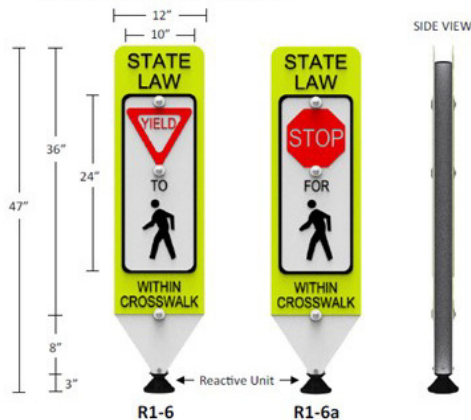


Posts Available Individually

IN-STREET PEDESTRIAN CROSSWALK SIGN

12" x 36" fluorescent yellow reflective sheeting with 10" x 24 white insert. White post and panel.

Overall height of unit is 47"



SAFETY PRODUCTS

FIRST AID / EMERGENCY SUPPLIES

CUP SLEEVE
ACCESSORY
(Sold Separately)
Available in
3G, 5G,
& 10G



**TRUCK MOUNT
ACCESSORY**
(Sold Separately)



**4G Refillable
bucket 3L Jar**



**ECONOMY
1.52G in high
visibility bag**



**Oil Only Medium
Absorbent Mat Pad**



**UNIVERSAL
20G Overpack
Salvage Drum**

**SPILL FIX
SPILL KITS**



**UNIVERSAL
65G Overpack
Salvage Drum**

FIRE EXTINGUISHERS



**2.5LBS & 5LBS
W/ VEHICLE MOUNT
10LBS, 20LBS, 30LBS**

FIRST AID KITS



**CABINETS
Class A & Class B**



**10 Person Kit
(Plastic or Metal)**

SMALL EQUIPMENT

SMALL EQUIPMENT

FULL LINE DEALER

GENERATORS



WGC 7500E



WI 2000CP



WI 2000P

ECHO TOOLS



HC-3020 HEDGE TRIMMER 30"



SRM 2620T



CS-590-18, 20



PB-8010T



MS-41BPD
4 Gallon
Backpack
Sprayer

MULTIQUIP / MIKASA

MTX-60
MTX-70



MVC82

QP3TK TRASH PUMP



SMALL EQUIPMENT

SMALL EQUIPMENT

OF ALL BRANDS

LITTLE
WONDER



PRO CRACK
CLEANER

OPTIMAX 9 &
13HP BLOWER



PRO VAC



ECHO ACCESSORIES



ECHO CSG 7410



GOLD
STANDARD



A22 VACUUMDELUX CUT
BONDED



IMPERIAL
PURPLE

BH90C



WM90SH8



MH12



CONCRETE VIBRATOR



IQM 5362

