



A Helix Company  
TRAFFIC SOLUTIONS

# CATALOG



## REQUEST A QUOTE

469-454-4674

[estimates@highwayits.com](mailto:estimates@highwayits.com)

1500 High Meadows Way, Cedar Hill, TX 75104

[WWW.HIGHWAYITS.COM](http://WWW.HIGHWAYITS.COM)

# SUMMER / WINTER PRODUCTS

## SUMMER GEAR



**SQUINCHER**  
Electrolyte  
Powdered  
Beverage Mix



**ORIGINAL BUFF**  
Assorted Colors



**OCCUNOMIX TD400**  
Tuff & Dry  
Wicking &  
Cooling Towel



**COOLING NECK  
TOWELS AND  
BANDANAS**



**ML KISHIGO 1624**  
Cooling Neck Shade



**HPSHADE30**  
Hardhat Shade  
Fits on KASK Helmets



**OCCUNOMIX 870**  
Snap-On Hard Hat  
Sweatband



**OCCUNOMIX  
LUX-RNG-ST**  
Two-Toned  
Solid Top  
Ranger Hat



**ML KISHIGO  
1622**  
HI-VIZ Cooling  
Neck Shade



**OCCUNOMIX TD500**  
Wicking and Cooling  
Ranger Hat with Neck  
Shade

## WINTER GEAR



**FLEECE-LINED  
PARKA**



**JS130 CLASS 3**  
Fleece-Lined  
Bomber Jacket



**CLASS 3**  
Pullover  
Hoodie



**CLASS 3**  
Full-Zip  
Hoodie



**KISHIGO  
JS119  
Jacket**



**ICE MELT**



**8711 / 8713  
CLASS 3**  
Insulated Pants



**JS121 CLASS 3**  
Insulated Bomber  
Jacket



**PORTWEST UB316PORTWEST**  
Two-Tone  
Hoodie



**Ladies  
Jacket**



**OCCUNOMIX  
SS260-HVY  
BALACLAVA**



**PORTWEST  
LED  
Beanie**



**PORTWEST  
LED  
Twin Beanie**



**BEANIES**  
Assorted  
Colors



**HARD HAT  
LINERS**

# PERSONAL PROTECTIVE EQUIPMENT HI-VIZ APPAREL



**SV272-3ZGM**  
Two Tone Surveyor  
Solid Front Pockets  
4 Pockets



**1565 / 1566**  
Two Tone Economy  
1 Pocket



**1191**  
Economy  
6 Pocket



**1576 / 1577**  
Two Tone Contrast  
X-Back 4 Pockets



**1505B**  
Breakaway  
3 Pockets



**US386**  
Mesh ANSI Class E  
2 Pockets



**US388**  
Mesh ANSI Class E



**E046**  
Class E Cargo  
Pants



# PERSONAL PROTECTIVE EQUIPMENT HI-VIZ APPAREL CONT.



**1242 / 1243**  
Two Tone  
Surveyor  
6 Pockets



**SV63**  
Two Tone Surveyor  
Solid Front,  
Mesh Back,  
8 Pockets



**1567 / 1568**  
Economy  
1 Pocket



**KISHIGO 1552B**  
Class 3 Vest



**KISHIGO 1750**  
Class 3 Vest



**S5014**  
High Performance  
Surveyor:  
Padded Neck,  
Hidden Back Pouch,  
7 Pockets



**ECONOMY WICKING BIRDSEYE T-SHIRT**  
(Lime/Orange Short & Long Sleeve Black Bottom Available)  
&  
**HIGH PERFORMANCE STRETCH WICKING W/ SEGMENTED TAPE**  
(Short Sleeve & Long Sleeve Available)



**GLO-G1**  
High Visibility Mesh  
Polyester Gaiters  
ANSI Class E



**3930**  
Mesh  
Gaiters



**RWJ102**  
Storm Cover  
Rain Pant  
ANSI Class E



**RWJ102**  
Storm Cover  
Rain Jacket  
ANSI Class 3  
3 Pockets



**3PC RAIN SUIT**  
ANSI Class 3  
(Jacket) 4 Pockets

**PERSONALIZED COMPANY LOGO AVAILABLE ON ALL APPAREL**



# PERSONAL PROTECTIVE EQUIPMENT ACCESSORIES / HEARING PROTECTION



## ILLUMAGEAR HALOTM SL HARD HALO LIGHT

The ILLUMAGEAR Halo SL is much more than a headlamp; it's a revolutionary lighting system that provides visibility in all directions up to a quarter-mile away. The new spotlight and task light features provide the ideal lighting conditions for any job. So you get it done right.

- Lightweight and cord free, 50ft spotlight, powerful flood task lighting, compatible with any standard hard hat, battery life indicator, charger included, water resistant.
- Includes 1x 18650 Rechargeable Lithium Ion Battery



- LED technology
- 3 brightness levels plus strobe
- Aircraft-grade 6061-T6 aluminum housing with Type III hard anodized finish
- Single switch located on side of the light
- Adjustable ratchet tilt head
- IP-X7 Waterproof
- Chemical, heat, and impact resistant
- 2' Male USB (Type A) to Male Micro-USB (Type B) Cable (Included)
- Powered by a rechargeable Li-ion battery (Included)
- Limited Lifetime Warranty



**Corded 100/BOX**  
**Uncorded 200/BOX**  
Available Individually



**WINGED**



**NRR 26dB / SNR 30dB**  
**ANSI S3.19**

# PERSONAL PROTECTIVE EQUIPMENT GLASSES / GOGGLES



**INTRUDER ECO**  
Individual or 12/case



**CARHART**



**ORANGE CRUSH**



**GREEN GRASSHOPPER AF**



**PYRAMEX ZTEK**



**POLARIZED**



**REDLINE CLEAR**



**SS100  
SIDESHIELDS**



**OVER GLASSES EYEWEAR**



**PYRAMEX**



**VADER  
GOGGLES AF**

# PERSONAL PROTECTIVE EQUIPMENT GLOVES



**GLOBAL GLOVE**  
**PORTWEST A220**  
**PUG-11**



**RWG18**



**RWG557**



**RWG10**



**GLOBAL GLOVE**  
**378GKGE**



**GRIPSTER**



**RWG22**



**RWG603**



**RWG566**  
**TOUCHSCREEN**



**FIRE RESISTANT**



## HARD HATS AND ATTACHMENTS



**STANDARD**  
**BRIM**



**FULL BRIM**



**VENTED**



**COLORS**  
**AVAILABLE**

**SKULLGARD**  
**TYPE 1**  
**ANSI/ISEA**  
**Z89.1-2009**  
**(Class G)**



**REFLECTIVE**  
**4"x1" HARD HAT STRIPS**  
**16 Stickers/Sheet**



**HHAB HARDHAT**  
**VISOR ATTACHMENT**

**CLAR**  
**FACESHIELD**



**MESH**  
**FACESHIELD**



# PERSONAL PROTECTIVE EQUIPMENT

## HARD HATS AND ATTACHMENTS



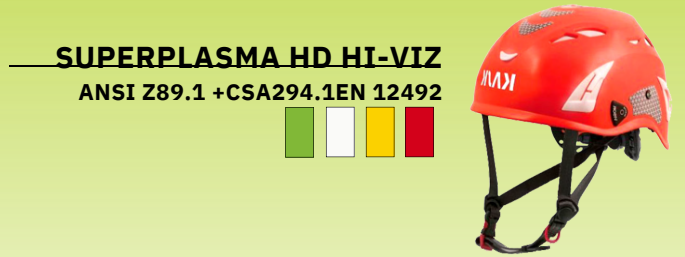
**ZENITH X**  
ANSI Z89.1-2014 EN 12492



**SUPERPLASMA HD**  
ANSI Z89.1 + CSA294.1 EN 12492



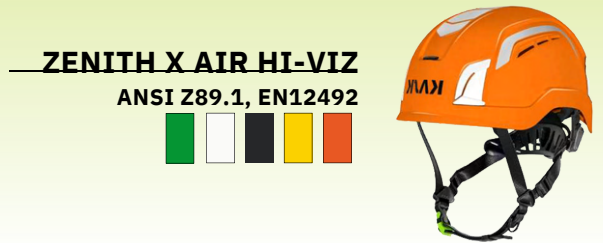
**ZENITH X HI-VIZ**  
ANSI Z89.1-2014 EN12492



**SUPERPLASMA HD HI-VIZ**  
ANSI Z89.1 + CSA294.1 EN 12492



**ZENITH X AIR**  
ANSI Z89.1, EN12492



**ZENITH X AIR HI-VIZ**  
ANSI Z89.1, EN12492



**ZEN VISOR**  
Clear/Smoke/Mirror



**V2 VISOR**  
Clear/Smoke/Mirror



**VISOR FULL FACE**  
Smoke/Clear



**HEARING PROTECTION**  
CE EN 352 / ANSI S3.19



**MESH VISOR**  
ANSI Z87.1, EN 1731/F

**PERSONALIZED COMPANY LOGO AVAILABLE ON ALL HARD HATS**

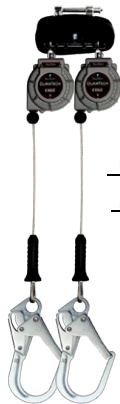
# PERSONAL PROTECTIVE EQUIPMENT HARNESSES / LANYARDS / RETRACTABLES



**FALLTECH 737210  
CROSS STRAP**



**FALLTECH CABLE  
PASS THRU SLING**



**FALLTECH  
89909TP3**



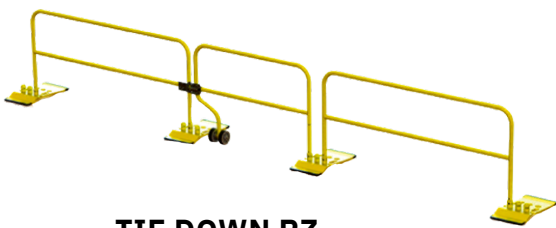
**FALLTECH 727630  
LEADING EDGE**



**FALLTECH 6'  
DURATECH**



**FALLTECH  
CONTRACTOR  
WEB**



**TIE DOWN RZ  
ROOF GUARDRAIL**  
Meets OSHA requirements.  
Made in USA

**FALLTECH HORIZONTAL LIFELINE KIT**  
OSHA CRF1962.502 AND CRF1910.66  
ANSI A10.32-2004



**FALLTECH 7440**  
Expansion  
wedge anchor  
for concrete,  
5,000lb



**FALLTECH  
FLOTECH  
3-D HARNES**



**FALLTECH  
7073LX  
CONTRACTOR  
3D construction  
belted full body  
harness**



**FALLTECH 7021  
JOURNEYMAN  
FLEX STEEL  
1D standard  
non-belted  
full body harness,  
tongue buckle  
leg adjustment**



**FALLTECH  
7015  
CONTRACTOR  
1D Standard  
Non-belted full  
body harness**

TRAUMA RELIEF PACK  
NOW INCLUDED

**WORK ZONE SAFETY**

**LIGHTING / BATONS / TRAFFIC FLARES**



**MULTIQUIP GLOBUG  
LIGHTING SYSTEMS**



**PAVER ATTACHMENT**

**LIGHT OPTIONS:  
400W-4000W Cart, Stand, &  
Trailer Mount**



**BATONS**



**SEQUENTIAL GUIDANCE FLARES**

Sold individually or in packs



**10 Pack**



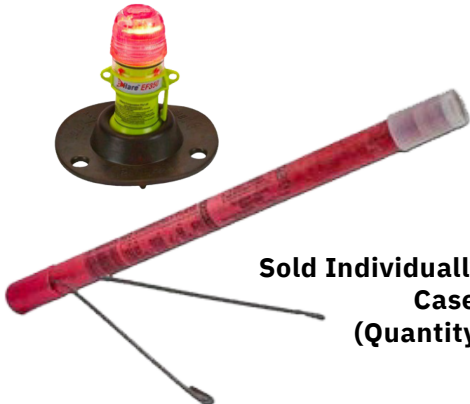
**6 Pack**



**4 Pack**



**LED & TRADITIONAL  
ROAD FLARES**



Sold Individually or by the  
Case  
(Quantity 36)



**CONE  
ADAPTORS**



**TRIANGLE KITS**



# WORK ZONE SAFETY

## WORK ZONE PRODUCTS



### VDOT STOP SLOW PADDLES

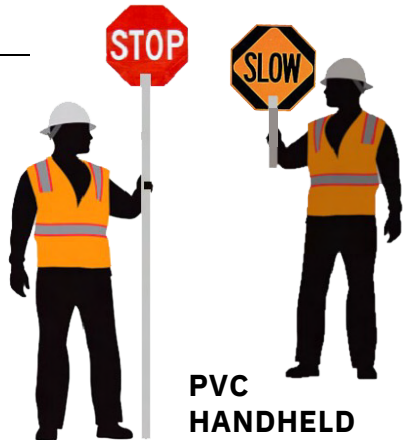


COVERS

ROLL-UP WITH 2  
PIECE STAFF /HANDLE  
COMES WITH BAG  
FOR EASY STORAGE



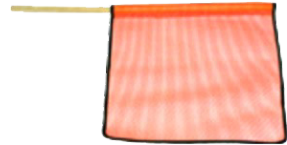
LED



PVC  
HANDHELD



### 18" AND 24" FLAGS KNIT OR VINYL



TYPE A/C D  
BATTERY



TYPE A/C  
PI-LIT  
SEQUENTIAL



TYPE A/C BATTERY



TYPE B  
SOLAR

### BARRICADE LIGHTS

### AIRPORT SAFETY 360 DEGREE SOLAR LIGHTS



BOX  
BASE



SCREW/  
THREADED UNIVERSAL  
BASE



BASE

### ON TOP MATERIAL LIFT



### FALLTECH 7509

- Tripod Kit With 7276 Tripod
- 7297 Winch, 7281 3-WAY Retrieval SRL
- 2x7291 B Leg Brackets



MANHOLE  
COVER LIFT



ALLEGRO 9401  
Manhole Guard



### GENERAL EQUIPMENT COMPANY

Non-Hazardous Air  
Ventilation Blower

# WORK ZONE SAFETY

## FLAGGER AND VEHICLE LIGHTING

### FLAGGERS STATION & WORK AREA LIGHTING



- 8 foot light elevation
- Collapsible aluminum extension mast
  - cam lock adjustments with retractable cable
- Stainless Steel legs
  - easy to retract and deploy creating tripod base
  - stable on uneven ground
- Lamp heads independently, directionally adjustable
- Battery rated for 500+ charge cycles
  - push to test voltage meter
- Charge with clamp style jumper cables
  - can jump start vehicle
- DC Power Port
  - Operate unit with external 12 VDC power
  - run other DC powered electrical devices
- Yellow LED flasher on unit for added safety
- Weatherproof case
- Lifetime warranty on light heads
- One year replacement warranty on battery and charger



### FENIEX FUSION ARROW BOARD

40" ARROW BOARD IS IDEAL FOR D.O.T., TRAFFIC, CONSTRUCTION OR TOW VEHICLE. THE FUSION ARROW BOARD FEATURES LEFT, RIGHT, AND CENTER-OUT ARROW PATTERNS AS WELL AS STANDARD WARNING PATTERNS FOR MAXIMUM VISIBILITY, SAFETY, AND TRAFFIC FLOW



### SOUNDOFF SIGNAL PINNACLE EPL9000

Available in 17", 24", 36", 42", 48", 54", or 60



### SOUNDOFF SIGNAL NROADS LED LIGHTBAR

Available in 17", 24", 36", 42", 48", 54", or 60



### MINI LIGHTBAR

Available in Permanent & Magnetic Mount



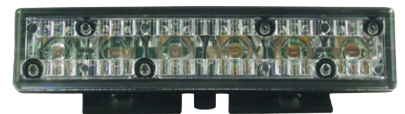
### MINI SURFACE MOUNT

Dual Available Black or White Housing



### LED BEACONS

Available in Permanent & Magnetic Mount



DECK/GRILLE MOUNT



BACKUP WARNING

**TOOLS & ACCESSORIES**

**MEASURING TOOLS**



**36"**



**48"**



**72"**



**8" TORPEDO**



**ULTRA BRIGHT BLADE**



**MAGNETIC**



**WIDE BLADE**



**PROFESSIONAL**



**300FT, 200FT, 100FT, AND 50FT FIBERGLASS BLADE MEASURING TAPE**



**TOOL LANYARD**



**TOOLS & ACCESSORIES**

**FENCE / LOAD SECURING / FUEL / HANDTOOLS**



**ASSEMBLED SILT FENCE**

Economical 36" or 24" Width Silt Fabrics

1- 1/2" X 1- 1/2" Hardwood Stakes

11 Stakes per 100'



**SAFETY FENCE**  
4' X 100' Roll Oak Stakes Available



**TARP STRAPS**



**RATCHET STRAPS**



**BINDERS**



**CHAINS**



**18" & 26" CONVEX MIRRORS**



**3 MIL & REINFORCED**

**RED**

Most widely used for flammable liquids such as gasoline.



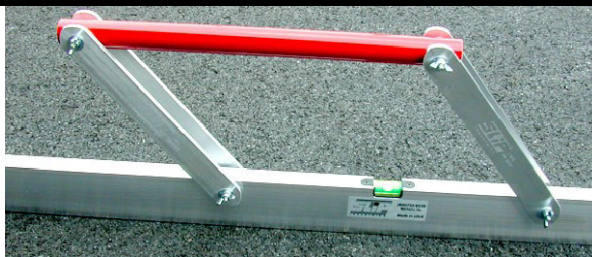
**BLUE**

Frequently used for storage of the kerosene.



**YELLOW**

Can be used to designate the storage of diesel fuel.



**12' HIGHWAY STRAIGHTEDGE**



**LUTES**



**BARS & TAMPERS**



**SCRAPERS**



**SHOVELS & SCOOPS**



**POST HOLE DIGGERS**



**RAKES**

**CUSTOM & MUTCD SIGNS**

**CUSTOM SIGNS**



**MUTCD**



R1-1



W20-7



W1-1R



R1-2



M4-10R



W1-8



R2-1



M1-1



R7-1



M3-4



W20-1



W16-7P



W11-2

**WE OFFER PERMANENT SIGN BRACING OR Z-BAR INSTALLATION**



**CUSTOM A-FRAME SIGN BOARDS.**

**MORE OPTIONS AVAILABLE!**

**TRUCK MOUNTED MUTCD**



G20-4



W20-V10

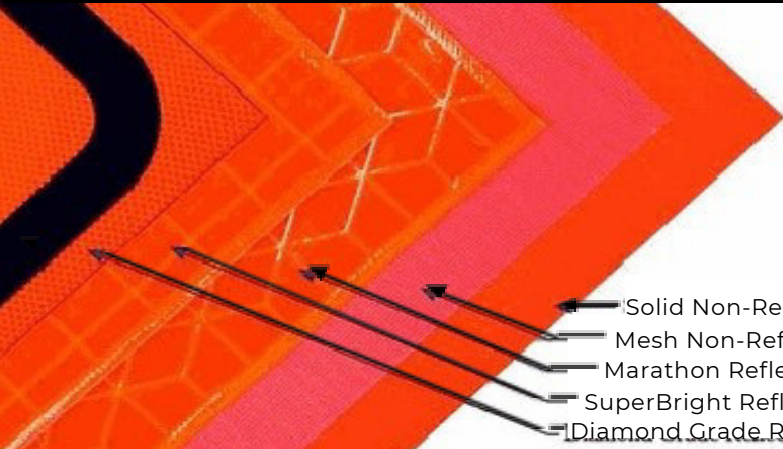


G20-V1

**WE MAKE TMA SIGNS!**



**ROLL UP SIGNS & STANDS**



- Solid Non-Reflective Vinyl
- Mesh Non-Reflective
- Marathon Reflective
- SuperBright Reflective
- Diamond Grade Reflective



**ALL STANDS ARE NCHRP-350 APPROVED & DOT APPROVED**



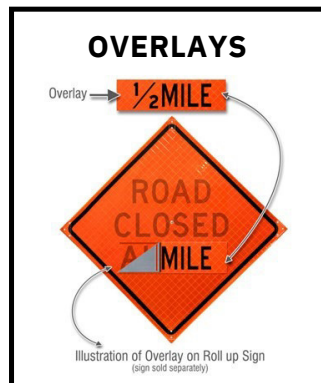
**SS548UCR  
SPRINGLESS  
STAND**



**DUAL SPRING**



**SINGLE  
SPRING**



- LEFT
- CENTER
- 500 FT
- 1000 FT
- 1/2 MILE
- 1500 FT
- 1 MILE



**MEDIAN ADAPTOR DUAL  
SPRING SIGN STAND**

**FLAGS & ATTACHMENTS**



**FULL SIZE STAND**

**CUSTOM ROLL-UPS AVAILABLE**

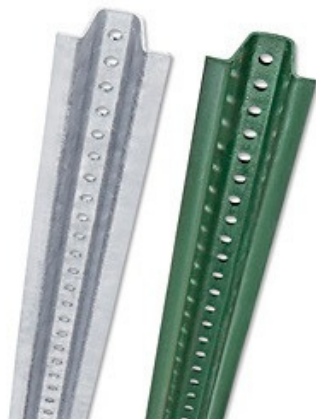


**SIGN POSTS / BRACING / STREET SIGNS**



**U-CHANNEL**

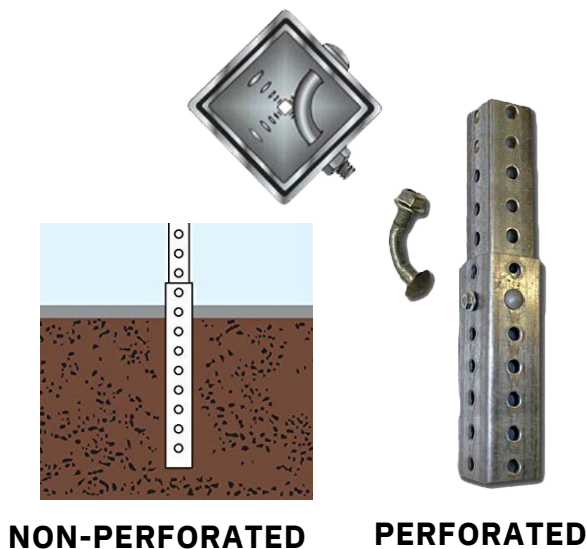
- Punched full length of post
- Powder coated green or hot dipped galvanized finish
- Posts available in lengths of 6', 7', 8', 9', 10', 11', 12'
- Posts 2# and 3# per foot
- 7' Galvanized 1.33# per foot (per VDOT spec)



**POST DRIVING / EXTRACTING**



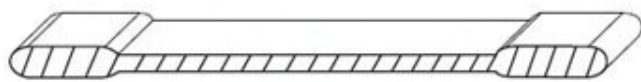
**SQUARE POST ANCHORS**



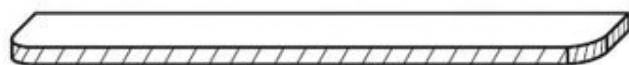
**NON-PERFORATED**

**PERFORATED**

**STREET SIGNS**



**Extruded**

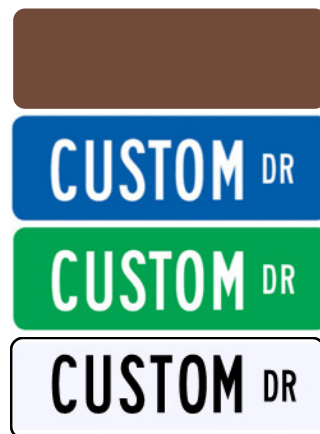


**Flat**

6" TALL FLAT OR EXTRUDED BLADE SIGNS ARE AVAILABLE IN:  
24", 30", 42", 48" Lengths

9" TALL FLAT OR EXTRUDED BLADES ARE AVAILABLE IN:

24", 30", 36", 42", 48" Lengths



**WE OFFER RIVET / SPACER INSTALLATION**

**CUSTOM STREET SIGNS AVAILABLE**

**SIGN POSTS / BRACING / STREET SIGNS CONT.**

**QUICKPUNCH**



**SQUARE  
PREPUNCH**

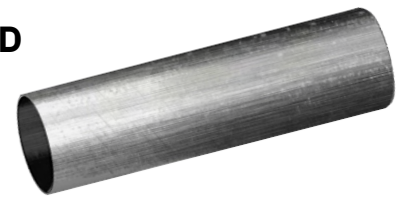


Part Number	Length x Size	Wall Thickness
PSTS10X2GA12	10' x 2" x 2"	12 GA
PSTS10X2.5GA12	10' x 2.5" x 2.5"	12 GA
PSTS12X2GA12	12' x 2" x 2"	12 GA
PSTS12X2.5GA12	12' x 2.5" x 2.5"	12 GA
PSTS14X2.5GA12	14' x 2.5" x 2.5"	12 GA

Part Number	Length x Size	Wall Thickness
PSTS8X2GA14	8' x 2" x 2"	14 GA
PSTS10X2GA14	10' x 2" x 2"	14 GA
PSTS12X2GA14	12' x 2" x 2"	14 GA
PSTS14X2GA14	14' x 2" x 2"	14 GA

Part Number	Length x Size	Wall Thickness
PSTS6X2.188GA10	10' x 2 3/16" x 2 2/16"	10 GA (Heavy-Duty)
PSTS10X2.5GA10	10' x 2.5" x 2.5"	10 GA (Heavy-Duty)
PSTS12X2.188GA10	12' x 2 3/16" x 2 3/16"	10 GA (Heavy-Duty)
PSTS12X2.5GA10	10' x 2.5" x 2.5"	10 GA (Heavy-Duty)
PSTS14X2.5GA10	14' x 2.5" x 2.5"	10 GA (Heavy-Duty)
PSTS16X2.5GA10	16' x 2.5" x 2.5"	10 GA (Heavy-Duty)

**ROUND**



**Available Lengths:  
10', 12', 13'  
Diameter:  
2 3/8"**

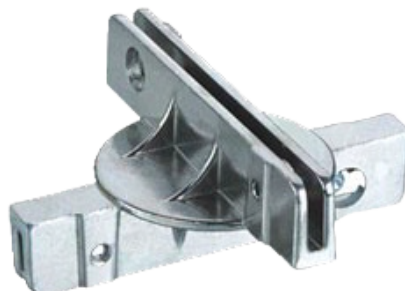
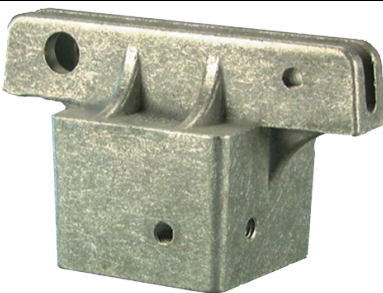
**ROUND POST  
SIGN CLAMP**



**SLIP BASES**



**MOUNTING BRACKETS**





# PAVEMENT SUPPLIES

## PAVEMENT MARKING & PAINT



TITAN 850



275 GAL TOTE



TITAN 3500

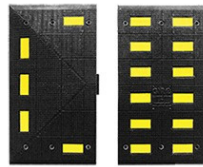
SETFAST  
ACRYLIC  
WATERBASED  
& FAST DRY  
ALKYD OILBASED  
TRAFFIC  
MARKING PAINT



## SPEED BUMPS / SPEED HUMPS / WHEEL STOPS

PRECAST CONCRETE  
WHEEL STOPS

- 6' STANDARD
- 6' SLOTTED
- TRUCK DOT-APPROVED
- 6' RUBBER



## MARKING / FLAGGING

CHALK & CHALK REELS



PERMANENT  
TRAFFIC & ALL  
PURPOSE SPRAY  
PAINT





# PAVEMENT SUPPLIES

## THERMOPLASTICS



### GLASS BEADS

Potters' Standard Highway Safety Marking Spheres meet or exceed every adopted highway safety marking sphere standard in effect today (AASHTO M247)



## HOT APPLIED THERMOPLASTICS



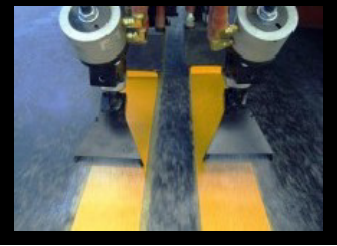
**TITAN  
THERMOMARK  
250**



**GRACO  
LINELAZER V 130HS**



**3600MIL  
THERMOPLASTIC  
APPLICATOR**



**GRACO  
LINEDRIVER HD**

**TRAILER MOUNT  
THERMOPLASTIC  
PREMELTER  
TP1500**



**BAGGED  
THERMOPLASTIC**

## STENCILS



**CONTRAST  
TAPE**

## PERMANENT / TEMPORARY TAPE



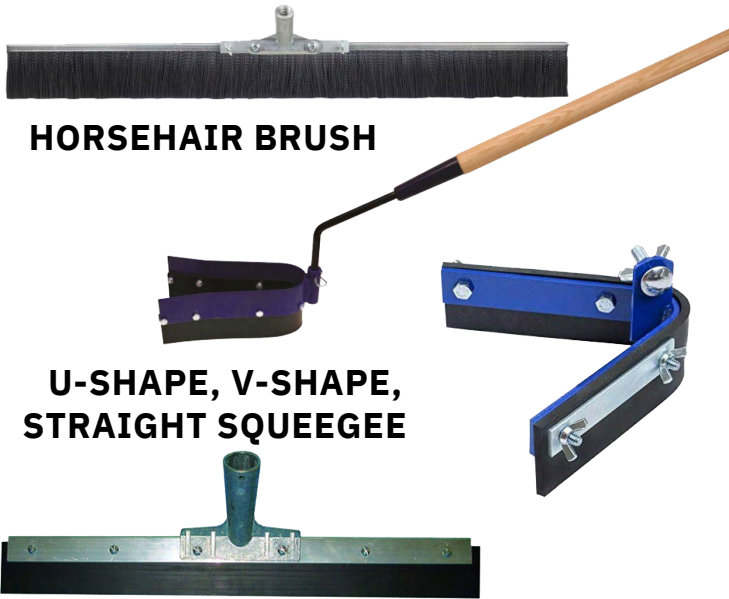
## PRE-FORMED THERMOPLASTICS



## EASYPOUR CONCRETE FORMING TUBES



PAVEMENT & CRACK SEALANTS



**HORSEHAIR BRUSH**

**U-SHAPE, V-SHAPE, STRAIGHT SQUEEGEE**



**NEYRA FORCE SEALER**

Neyra Force is a water-based, petroleum resin sealer that outperforms traditional pavement sealers. While providing the benefits of a coal tar sealer, Neyra Force is environmentally friendly and safe for your employees to apply.



**THERMOFLEX**  
Hot Applied Crack/Joint ThermoSealant



**GATORFILL**  
Trowelable Surface Mastic



**PLYOLASTIC**  
Pourable Crack Filler



**RY10MA**



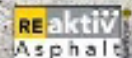
**RY10MA-PRO**

**AQUAPHALT™**

Finally! A Permanent, Environmentally Friendly Asphalt Patch

Revolutionary permanent asphalt and concrete repair material for pothole repair, pavement repair, utility cuts, walkways, tennis courts and driveway repair – it works even in wet and cold conditions

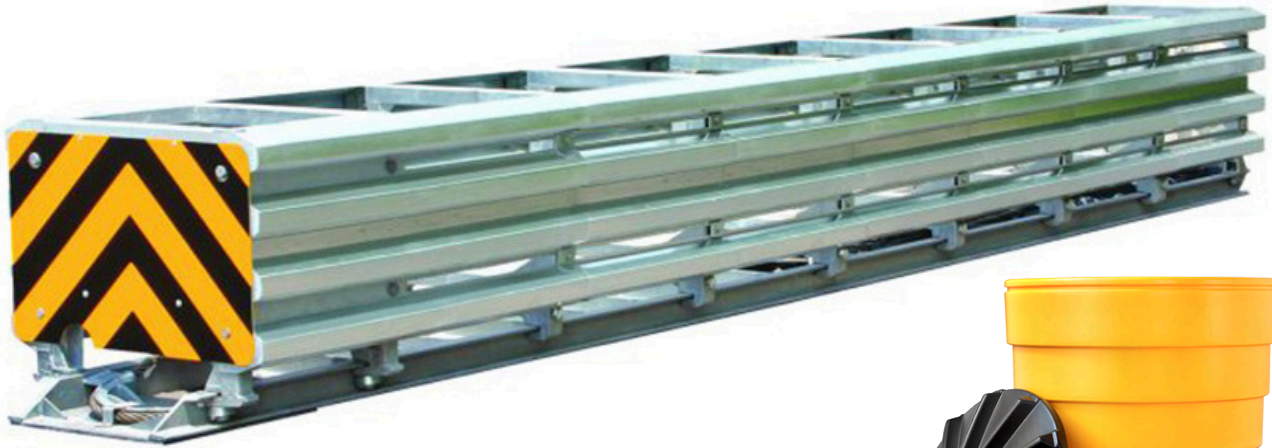
- ▶ Eco-friendly binder reacts and hardens with only water—no toxic solvents
- ▶ Aquaphalt is laid directly from its container—no need to mobilize large crews and equipment
- ▶ Minimizes roadway disruption with no need for special preparations
- ▶ Pre-mixed and permanent Aquaphalt is a one-time fix





# HIGHWAY SAFETY DEVICES

## ATTENUATORS & SAND BARRELS



**SCI SMART  
CUSHION**



**CRASH GUARD  
SAND BARRELS**

## PORTABLE RUMBLE STRIPS

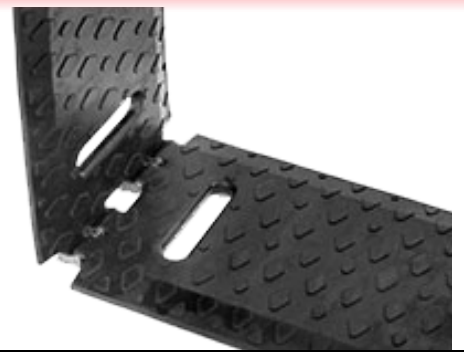


**T HANDLE FOR EASY  
LOADING AND UNLOADING**



**DEMO OF USE AVAILABLE**

# RoadQuake<sup>2</sup>F

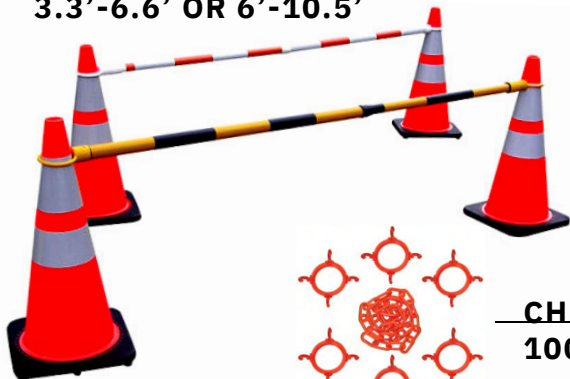




# HIGHWAY SAFETY DEVICES

## CONES & CONE ATTACHMENTS

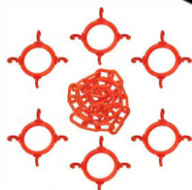
TELESCOPING CONE BAR  
3.3'-6.6' OR 6'-10.5'



CONE WEIGHTS  
4.5LB OR 7LB



PI-LIT SUNFLOWER BEACON



CHAIN CONNECTOR  
100' OR 500' Chain

CUSTOM CONE SIGNS



Double Side Plug



One Side Plug



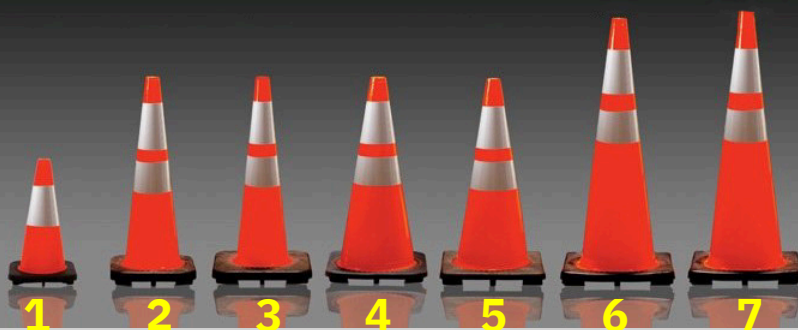
COBRA TAPE



## CONE VARIATIONS

12" NOT SHOWN

- 1. 18" 3LBS
- 2. 28" 7LBS SLIM
- 3. 28" 10LBS SLIM
- 4. 28" 7LBS WIDE
- 5. 28" 10LBS WIDE
- 6. 36" 10LBS
- 7. 36" 12LBS



CONE BAR SIGNS  
Customizable Option Available



Available Colors

\*\*Non-Reflective Available



CONES & BARRELS AVAILABLE FOR RENT & PERSONALIZATION

# HIGHWAY SAFETY DEVICES

## CHANNELIZERS & BARRICADES



### CHANNELIZERS



**FLEXI-GUIDE  
FG300**



**SURFACE  
MOUNT**

**GROUND  
MOUNT**



**BUTYL PADS**

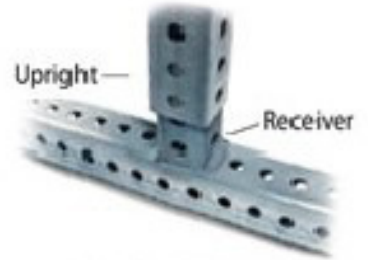
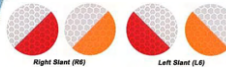
### BARRICADES



**TYPE II**



**TYPE III**



Upright

Receiver

**Stub Weld Base**

Available in:  
4', 6', 8'  
10', 12'



**DIAMOND  
GRADE  
PATTERN**

Available  
Widths  
2", 4", 6"



Tape Available by  
the Foot



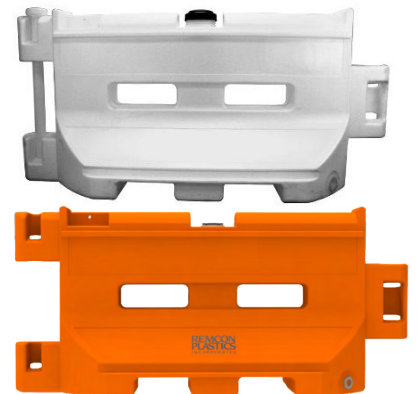
1" X 150', 2" X 150', 4" X 150',  
6" X 150', AND 8" X 150'  
**GREAT FOR HARD HAT STRIPS!**

### WATER-FILLED BARRIER

Fencing Attachment Optional



Available  
For  
Purchase  
Or Rent

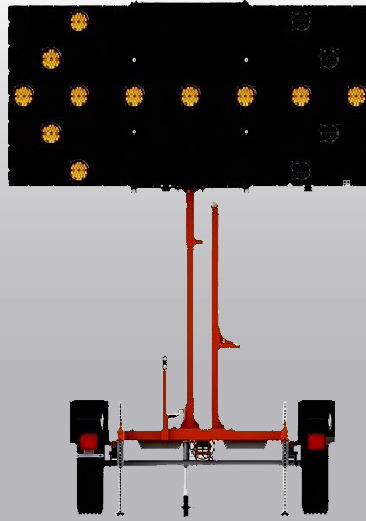


# MOT EQUIPMENT SALES & RENTALS

## ARROW BOARDS / SPEED CAM / LIGHTS / FLAGGER



**VER-MAC PCMS 1210 PRO  
SERIES 3 LINE OR FULL MATRIX**



**VER-MAC ST-4815  
PRO SERIES**



**SP-3248V SPEED CAM**

### WANCO TRUCK MOUNTED ARROW BOARDS



- 24 x 48 (61 x 122)
- 30 x 60 (76 x 152)
- 36 x 72 (92 x 183)
- 48 x 96 (122 x 244)

### VER-MAC PTL1000



Ver-Mac's PTL1000 is a compact, battery powered portable target light. The PTL-1000 features Ver-Mac's exclusive Nightbrite Technology

### WANCO COMPACT



Up to 18 units on a single truck, aim lights from the ground, heavy gauge all steel body, tallest mast in class at 24 1/2 FT; largest fuel tank in class at 60 GAL

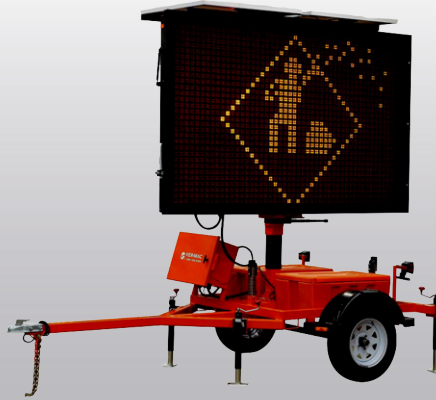


# MOT EQUIPMENT SALES & RENTALS

## VARIABLE MESSAGE BOARDS / TRAFFIC SIGNAL



**VER-MAC PCMS 548LE**



**VER-MAC PCMS 320**

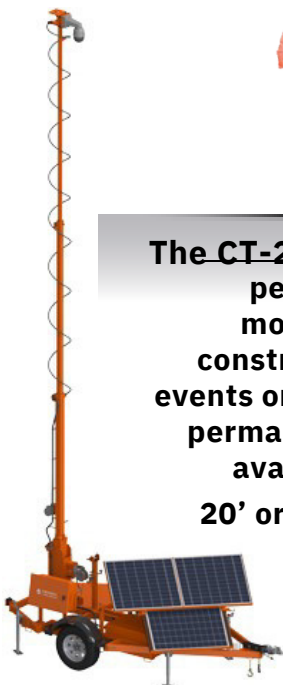


**VER-MAC PCMS 4880**

### NORTH AMERICA TRAFFIC RCF 2.4 AFAD

The automated flagger assistance device can be used on many DOT jobsites and is MUTCD compliant.

Still recognized today as the **SAFEST ALTERNATIVE** to human flaggers for temporary work-zone traffic control.



The **CT-2430 camera trailer** is perfect to remotely monitor work zones, construction sites, special events or any application where permanent cameras are not available or feasible.  
20' or 30' mast available.



### VER-MAC'S TLD 3612G3

A battery/solar-powered Nema TS5 compliant portable traffic signal trailer set. This tandem tow trailer set comes with two traffic signal heads on each trailer.

The **TLD-3612G3** features include the innovative V-Touch TLD controller, tilt-and-rotate solar panels, hydraulic lift mechanism, advance radio communication and our JamLogic software (optional)

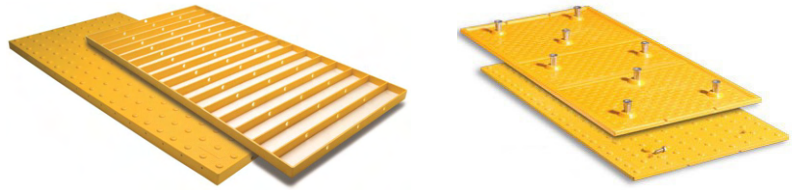


**TLD-2312**

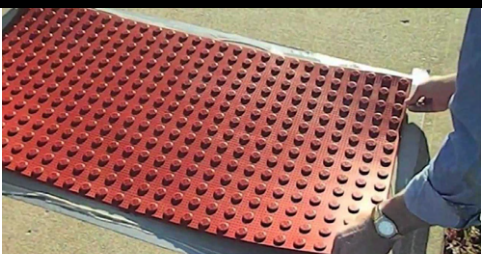


# CAST TILES / FLEXIBLE TILES

## CAST TILES / FLEXIBLE TILES



The **Cast-in-Place** panel is a great long term solution for any project or climate. Made with a durable exterior homogenous glass, carbon, and fiberglass reinforced composite material; the thick, heavy panel and sturdy embedment ribs ensure a strong bond and superior structural support.



The **Surface Applied** panel is the perfect solution for retrofitting existing concrete surface or new construction, our surface applied detectable warning panels are constructed of an exterior grade, fiberglass polymer composite material.

## FLEXIBLE SIGNS | BOLLARDS | COVERS



**Fixed Base**  
Permanent Surface Mount Base



**One Base®**  
Universal Portable Base



**Drivable Base**  
Off-Road Soil Installation Base



**Recessed Base**  
In-ground Snow-Plowable Base



**Magnetic Base**  
Non-Vehicular Multi-Use Base



**Quick Release Base**  
Permanent Base for Interchanging Uprights

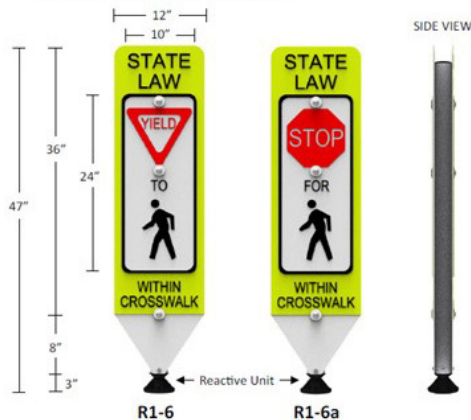


Posts Available Individually

### IN-STREET PEDESTRIAN CROSSWALK SIGN

12" x 36" fluorescent yellow reflective sheeting with 10" x 24 white insert. White post and panel.

Overall height of unit is 47"





# SAFETY PRODUCTS

## FIRST AID / EMERGENCY SUPPLIES

CUP SLEEVE  
ACCESSORY  
(Sold Separately)  
Available in  
3G, 5G,  
& 10G



**TRUCK MOUNT  
ACCESSORY**  
(Sold Separately)



**4G Refillable  
bucket 3L Jar**



**ECONOMY  
1.52G in high  
visibilty bag**



**Oil Only Medium  
Absorbant Mat Pad**



**UNIVERSAL  
20G Overpack  
Salvage Drum**

**SPILL FIX  
SPILL KITS**



**UNIVERSAL  
65G Overpack  
Salvage Drum**

## FIRE EXTINGUISHERS



**2.5LBS & 5LBS  
W/ VEHICLE MOUNT  
10LBS, 20LBS, 30LBS**

## FIRST AID KITS



**CABINETS  
Class A & Class B**



**10 Person Kit  
(Plastic or Metal)**



# SMALL EQUIPMENT

## SMALL EQUIPMENT

FULL LINE DEALER

GENERATORS



WGC 7500E



WI 2000CP



WI 2000P

ECHO TOOLS



HC-3020 HEDGE TRIMMER 30"



SRM 2620T



CS-590-18, 20



PB-8010T



MS-41BPD  
4 Gallon  
Backpack  
Sprayer

MULTIQUIP / MIKASA

MTX-60  
MTX-70



MVC82



QP3TK TRASH PUMP



# SMALL EQUIPMENT

## SMALL EQUIPMENT

OF ALL BRANDS

LITTLE  
WONDER



**PRO CRACK  
CLEANER**

**OPTIMAX 9 &  
13HP BLOWER**



**PRO VAC**



### ECHO ACCESSORIES



### ECHO CSG 7410



**GOLD  
STANDARD**



**A22 VACUUMDELUX CUT  
BONDED**



**IMPERIAL  
PURPLE**

**BH90C**



**WM90SH8**



**MH12**



**CONCRETE VIBRATOR**



IQM 5362

